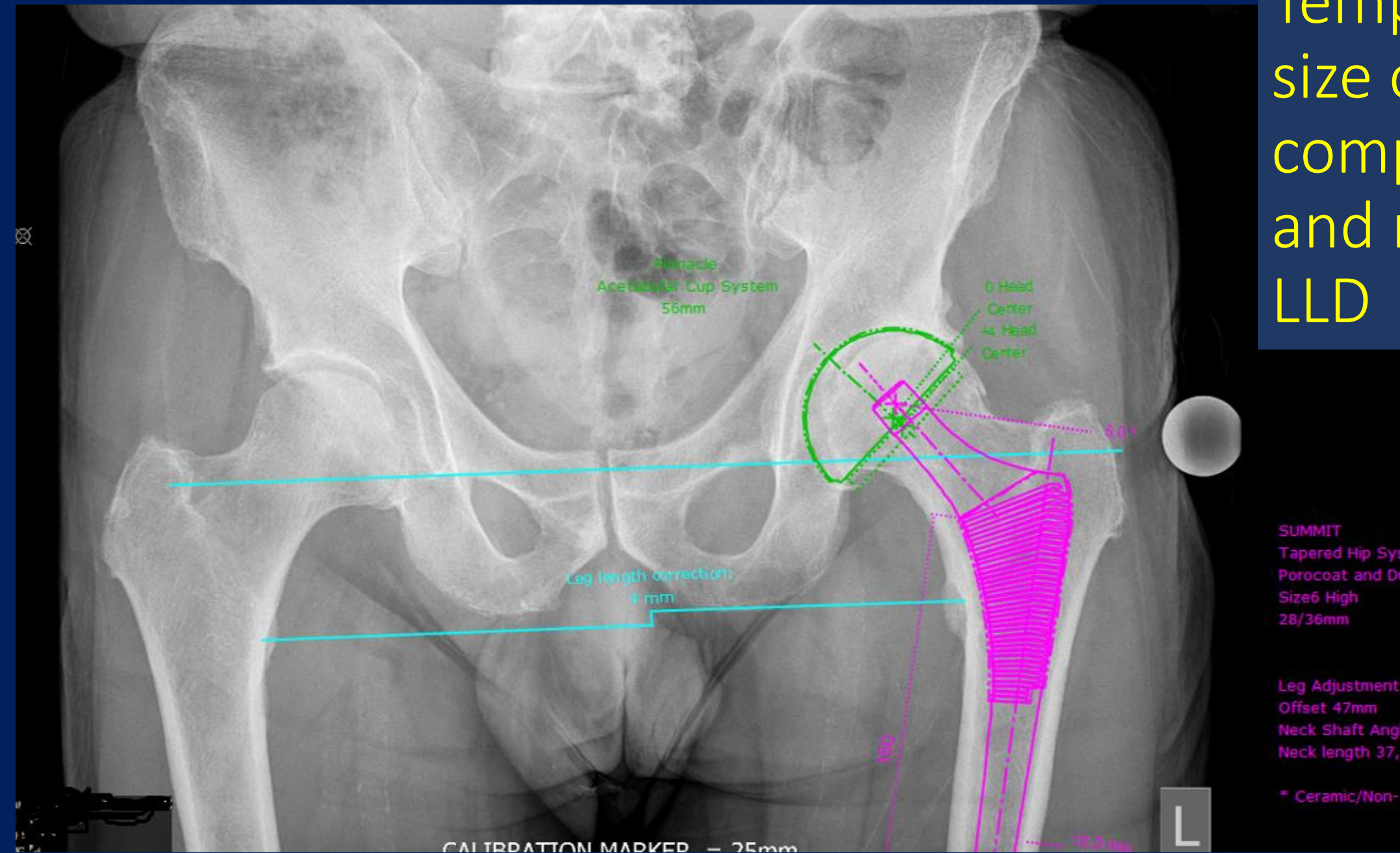


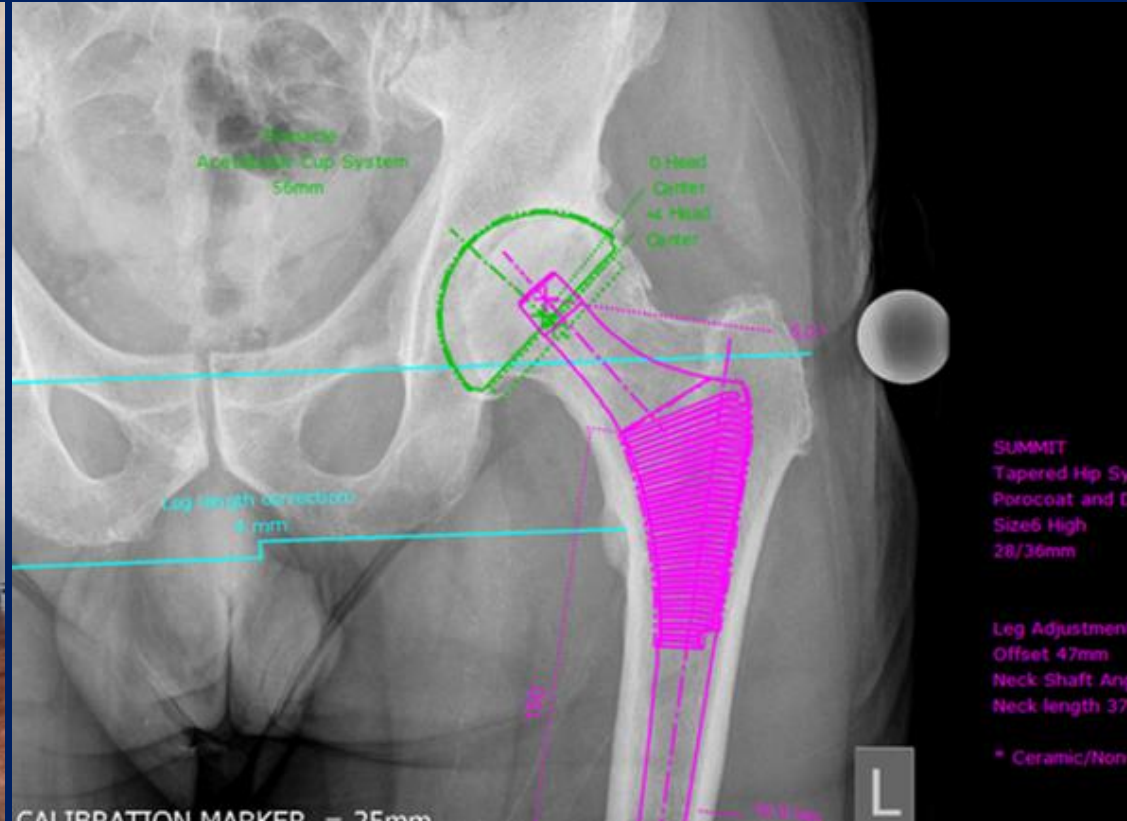
Template size of components and measure LLD



Measure clinical LLD



Enter desired correction



PLANNED RESULT

PLANNED RESULT

4

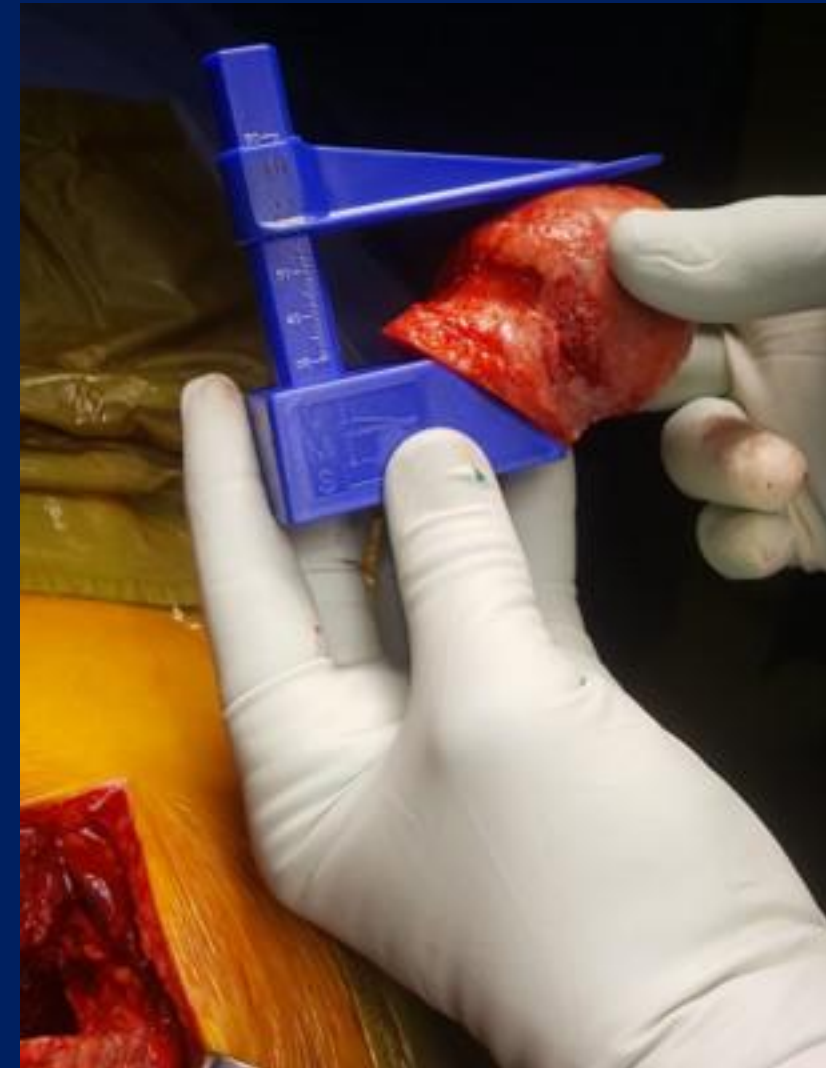
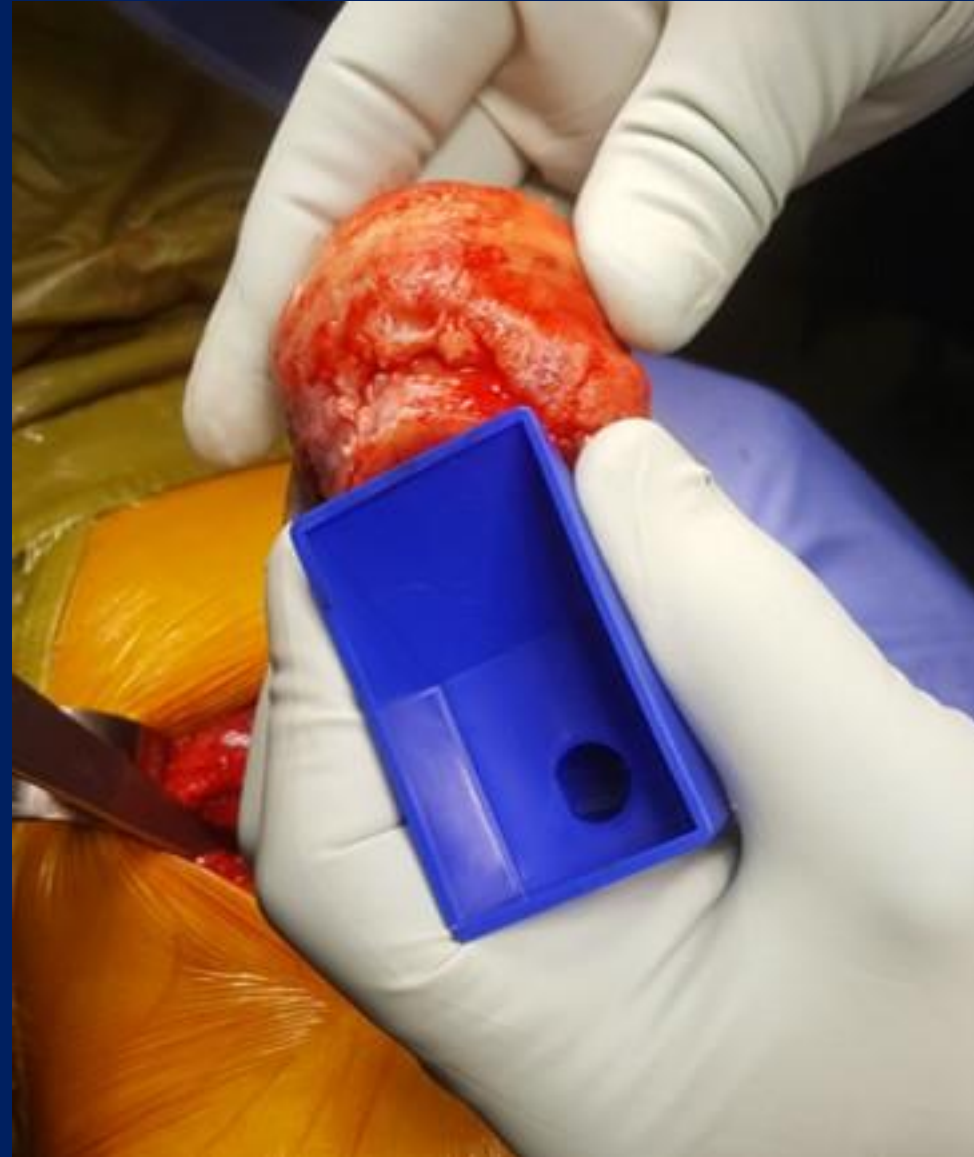
Dislocation and 45° neck osteotomy



Note the inferior reference point- corresponds to the final position of the broach



Measure the correct way around



Enter the resected height



4 mm
PLANNED

0.0 mm
IMPLANT
HEIGHT

mm

LEG LENGTH CORRECTION

RESECTED BONE HEIGHT

58

CENTRE OF ROTATION CHANGE

Select proximal or distal

Enter centre of rotation change

VERTICAL ADJUSTMENT STEM

Select above or below calcar

Enter vertical adjustment stem

NEW CASE

Acetabular diameter

The first reamer size that fills the acetabulum making full contact, usually just bigger than the femoral head diameter, usually 1 size down from the final implant diameter.



SELECT ACETABULAR, HEAD & STEM

ACETABULAR DIAMETER

56

MANUFACTURER

De Puy

STEM TYPE

Summit

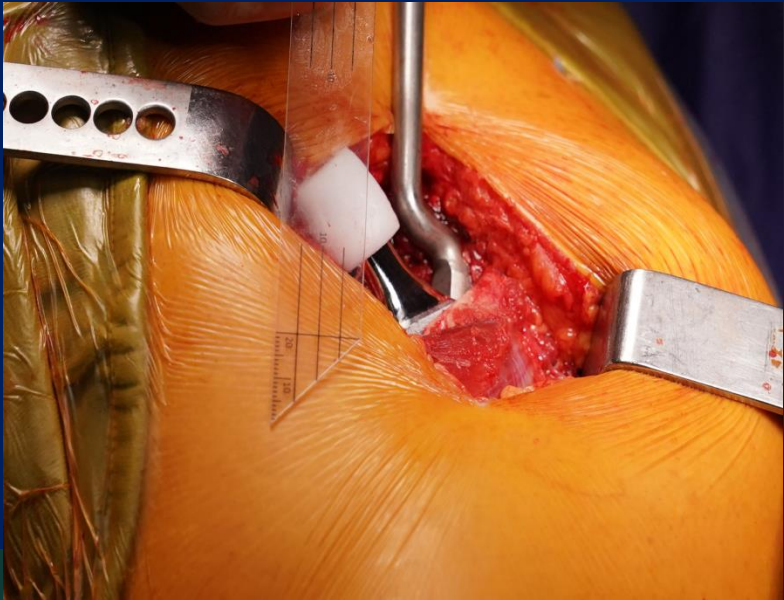
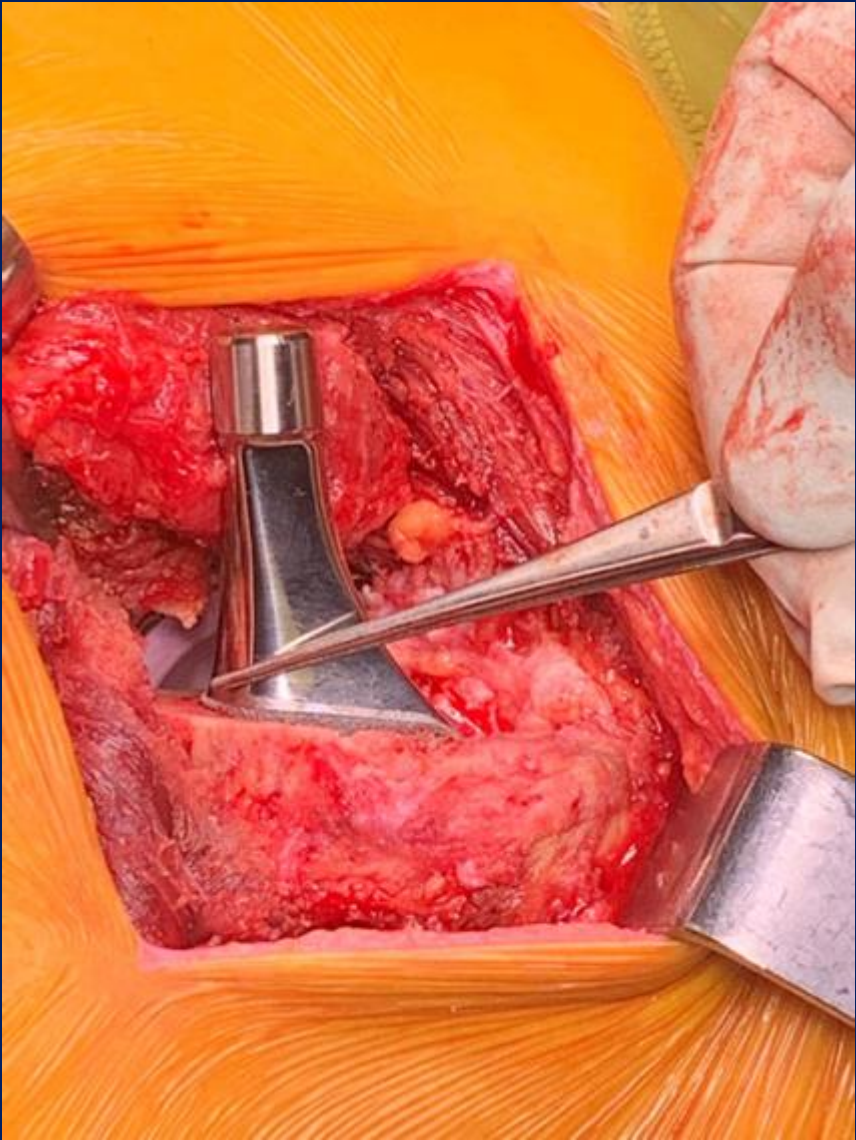
STEM SIZE

6 High

HEAD LENGTH

+5

Measure the distance above the inferior reference point using the angled ruler



VERTICAL ADJUSTMENT STEM

Select above or below calcar

Select above or below calcar

Above

Below

NEW CASE

4 mm
PLANNED

3.2 mm

LEG LENGTH CORRECTION

60.2 mm
IMPLANT
HEIGHT

RESECTED BONE HEIGHT

58

CENTRE OF ROTATION CHANGE

Select proximal or distal

Enter centre of rotation change

VERTICAL ADJUSTMENT STEM

Above

1

The final result

DEMOGRAPHICS

SURGEON NAME

MBN

SURGERY DATE

19 July 2019

PATIENT NAME

Enter Patient Name

PATIENT BIRTHDATE

Day Month Year

PLANNED RESULT

PLANNED RESULT

4

SELECT ACETABULAR, HEAD & STEM

ACETABULAR DIAMETER

56

MANUFACTURER

De Puy

STEM TYPE

Summit

STEM SIZE

6 High

HEAD LENGTH

+5

4^{mm}
PLANNED

3.2^{mm}

LEG LENGTH CORRECTION

60.2^{mm}
IMPLANT
HEIGHT

RESECTED BONE HEIGHT

58

CENTRE OF ROTATION CHANGE

Select proximal or distal

Enter centre of rotation change

VERTICAL ADJUSTMENT STEM

Above

1

NEW CASE

Common scenarios

- Leg length and tension correct: Proceed to the definitive prosthesis.
- Under corrected: This can be adjusted by increasing the neck length or increasing the size of femoral prosthesis.
- Over corrected: This can be adjusted by decreasing the neck length or adjusting the femoral prosthesis position. This may require resection of an appropriate amount of femoral calcar.
- Leg length correct but tension incorrect: change the offset – note in certain prostheses this will change the leg length but will be shown by the app.